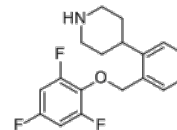


**Product Name** : Ampreloxetine  
**Cat. No.** : PC-35438  
**CAS No.** : 1227056-84-9  
**Molecular Formula** : C<sub>18</sub>H<sub>18</sub>F<sub>3</sub>NO  
**Molecular Weight** : 321.343  
**Target** : Monoamine Transporter  
**Solubility** : 10 mM in DMSO



## Biological Activity

Ampreloxetine (TD-9855) is a potent monoamine reuptake inhibitor with pIC<sub>50</sub> of 8.0, 8.6 and 6.8 for human NET, SERT, and DAT, respectively.

Ampreloxetine displays an inhibitory selectivity of 4- to 10-fold for NE at human and rat transporter.

Ampreloxetine engaged norepinephrine transporters (NET) and serotonin transporters (SERT) in rat spinal cord, with a plasma EC<sub>50</sub> of 11.7 ng/mL and 50.8 ng/mL, respectively.

TD-9855 is an investigational dual norepinephrine (NE) and serotonin (5-HT) reuptake inhibitor with selectivity for NE over 5-HT (NSRI).

## References

Smith JA, et al. *Int J Neuropsychopharmacol*. 2014 Dec 13;18(2). pii: pyu027.

**Caution: Product has not been fully validated for medical applications. Lab Use Only!**

E-mail: tech@probechem.com